

Get Ready for Take-off!

(Level 1 Review)

RHYTHM

- Connect each note to its matching rest.

TIME SIGNATURES

- Draw bar lines for this time signature.
- Write 1 2 3 4 under the correct beats. Then play the rhythm using a C chord.

- Draw bar lines for this time signature.
- Write 1 2 3 under the correct beats. Then play the rhythm using a G chord.

READING

- Draw a line connecting each musical term to the correct place in the music.

G clef, or treble clef 2nd 3rd 4th 5th double bar line

time signature

whole rest

mezzo piano

accent mark

quarter rest

half rest

F clef, or bass clef

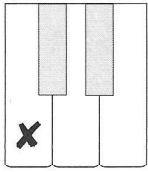
forte

bar line

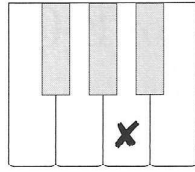
staccato

THEORY

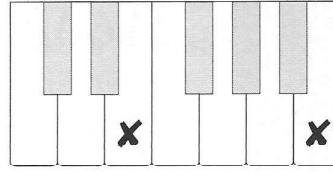
- Put a ✓ on the correct key from the ✗.



UP a half step



DOWN a half step



UP a half step

DOWN a half step

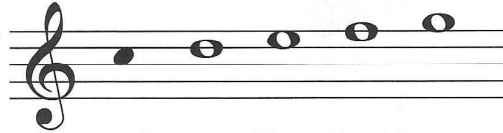
- Circle **tonic** (step 1) or **dominant** (step 5) for the shaded note.

C 5-Finger Scale



tonic / dominant

C 5-Finger Scale



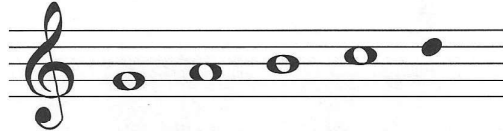
tonic / dominant

G 5-Finger Scale



tonic / dominant

G 5-Finger Scale



tonic / dominant

- Play these I and V7 chords:

C 5-Finger Scale



I V7 I

G 5-Finger Scale



I V7 I

SYMBOLS AND TERMS

- Connect each term to its correct definition.

legato

staccato

ritard.

sharp

flat

- Up a half step
- Smooth, connected
- Detached, lift quickly
- Gradually slow down
- Down a half step